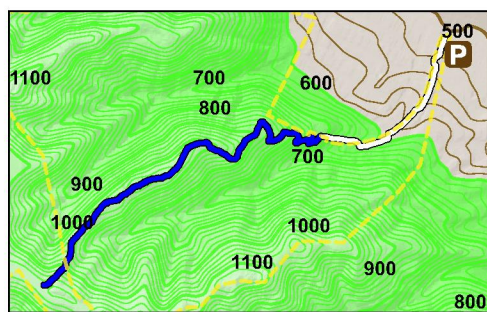


Ahwingna Trail OPDMD Segment



- Ahwingna Trail
- OPDMD Accessible Segment

Ahwingna Trail (OPDMD Accessible Segment)

Trail length: 1,394 feet
Elevation gain: 0.26 miles



*Allowed on adjacent fire road.

Trail Legend

- Multiple purpose trail
- Hiking only trail
- Preserve boundary
- Fire road (gravel)
- County multiple purpose trail
- Restrooms
- Parking
- Wheelchair-accessible

Note: Cross slope is 2% or less on the OPDMD accessible portion of Ahwingna Trail.

There are 2 short and 1 long section of OPDMD accessible trail with width's less than 5 feet; however, these sections all occur where there is a parallel fire road.

Unauthorized motorized vehicles are prohibited from all trails.

Data Sources: NPS, 2008; USGS, 2016; Puente Hills Habitat Preservation Authority, 2016.

