

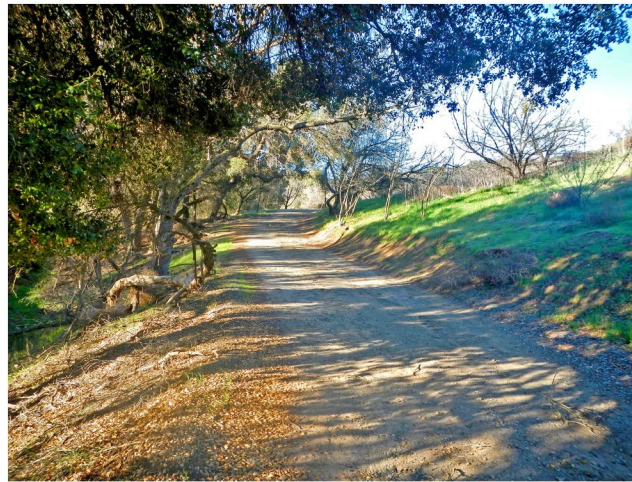


View of Powder Canyon Trail (OPDMD segment).

Powder Canyon Trail Requirements

The Puente Hills Preserve allows use of OPDMDs on a portion of Powder Canyon Trail (see map on this brochure) with the following requirements for use:

- No smoking or open flame is allowed within the Preserve.
- No access is allowed for 48 hours or more after a rain event until the roads/trails are dry as determined by the rangers. Preserve Road/Trail Users may call the Habitat Authority at 562-945-9003 extension 5# at any time for a status update of whether the trails are open or not. Preserve Road/Trail Users shall call this number before entering the Preserve from May 1 through November 15 or during any other high fire hazard time. Updates are also available by visiting www.HabitatAuthority.org
- Preserve Road/Trail Users must do everything reasonably possible to not block emergency vehicle access on the road/trails, to not block roads/trails for other users, and to prevent fires in the conduct of their activities. Any discovered fire on or around the Preserve shall be called into the fire department using 911.
- OPDMDs must be attended at all times and must not stop, park, or travel over vegetation at any time.
- All-electric OPDMDs that can access the trail from the trailhead are allowed immediate entry onto Powder Canyon Trail.
- Two-wheeled OPDMDs that are powered by internal combustion engines, such as motorcycles or mopeds, are prohibited entry due to fire safety concerns.
- Consistent with local jurisdictional ordinances, OPDMDs with decibel levels exceeding 70 are prohibited from entry. This includes most all-terrain vehicles (ATVs).
- OPDMDs that are not all-electric must be equipped with spark arresters or catalytic converters.
- The maximum speed limit on Powder Canyon Trail is 15 miles per hour or less if conditions warrant for safety of natural resources or other users.



View of Powder Canyon Trail (OPDMD segment).

Powder Canyon Trail Description

A portion of Powder Canyon Trail is accessible to other power-driven mobility devices (OPDMDs). OPDMDs include a range of devices powered by batteries, fuel, or other engines. They are not necessarily designed for individuals with disabilities but are often used by individuals with disabilities as their mobility device of choice.

24-hour ranger emergency number: (562) 698-1446 or dial 911

Please Share the Trail:



Any OPDMD needing access through the locked gate is required to have a permit. Permit forms are available online at www.habitatauthority.org or by contacting the Authority's ADA coordinator. The permit requires proof of vehicular insurance and sets guidelines for safety precautions including for fire as it pertains to devices with fuel powered engines. Preserve Road/Trail Users must display the Authority issued permit on their vehicle's dashboard. Once a permit has been issued, the Preserve Road/Trail User will be provided the combination for the Authority locks that will enable trail/road access; at no time shall the gates be left open. Permits are valid for and renewable on an annual basis.



Powder Canyon Trail Other Power-Driven Mobility Device (OPDMD) Guide

Trail Map

Prepared for recreational use of lands owned or managed by the Habitat Authority

7702 Washington Ave. • Suite C
Whittier, CA 90602 • (562) 945-9003
Web site: www.HabitatAuthority.org
E-mail: info@habitatauthority.org